



# Specialist education provider for complex project delivery

## Accreditations



# About us



## Developing and inspiring the next generation of leaders, equipped to manage complex projects and drive positive change

We are a specialist provider of Project Management and Project Control apprenticeships. Our courses will train and upskill your workforce with the expert knowledge and skills required to lead complex projects and drive business growth successfully.

Our training programmes deliver quick results, supporting employers to increase productivity and to attract and retain high calibre staff. These programmes provide a fast track to degree and apprenticeship qualifications which lead to outstanding opportunities for personal and career progression.

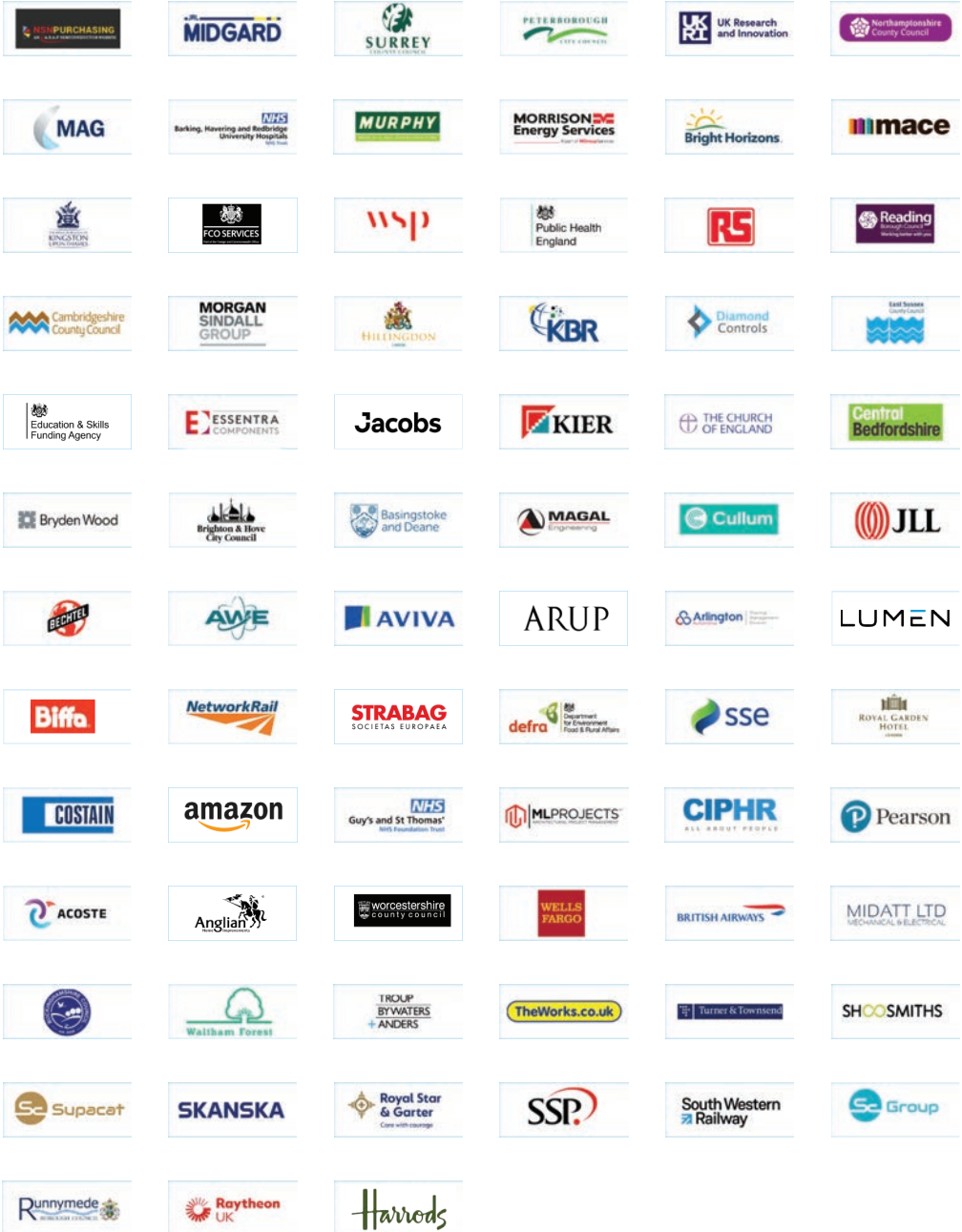
LMC is part of the ProjCon group, an internationally renowned organisation specialising in project management consultancy and solutions. Learners benefit from this wider group specialism in terms of very up-to-date sector exposure and expertise of staff. As part of the ProjCon group, LMC students have unique access to industry expertise, resources and networking events both nationally and internationally which enhance their experience and accelerate learning.

## What Ofsted say about LMC

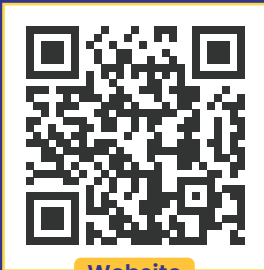
The knowledge, skills and behaviours apprentices develop are new and substantial.' 'Apprentices have a positive and purposeful attitude to their training. Apprentices quickly become more confident in their roles and take on new responsibilities at work and employers value the skills that apprentices develop and bring to the workplace'. **(Ofsted, Full Inspection Report, March 2024)**



# Who we work with



# Who we work with



Website

## At London Metropolitan College

Putting the learners at the heart of everything we do

### Contact Us

admin@londonmetropolitan.college

+44 (0) 208 075 7480

www.londonmetropolitan.college

# Apprenticeship Overview

## OUR APPRENTICESHIPS

### Delivery approach

At LMC, we have used our specialist skills in Project Controls and management to devise an advanced training schedule and delivery system designed to work around employers' requirements.

We set out to develop our students' competencies by giving them access to an online learning environment that encourages skill-building, information retention and transferable experience into the workplace.

Courses are also delivered in online classrooms, which include technical, occupational and software training.

### Key Features

#### All of our apprenticeship programmes offer:

- A dedicated tutor to support students throughout the course
- Flexible and innovative training methods geared towards different learning styles
- Continuous access to learning via online learning platforms
- Tuition from highly experienced specialists
- An NUS Apprenticeship Extra card, for access to discounts and online offers





## LEVEL 3

# PROJECT CONTROLS TECHNICIAN APPRENTICESHIP

## Course information

This programme is designed to develop competent Project Controls Technicians. Students will learn how to control, monitor and systematically analyse progress and performance data for engineering, manufacturing, construction and infrastructure projects. The apprenticeship includes the ECITB Level 3 Diploma in Project Controls Practice.

This apprenticeship also includes the ECITB Level 3 Diploma in Project Controls Practice.

## Delivery approach

Virtual, including technical, occupational and software training

## Standard Duration

Up to 36 Months (this does not include EPA period)

## Start Date

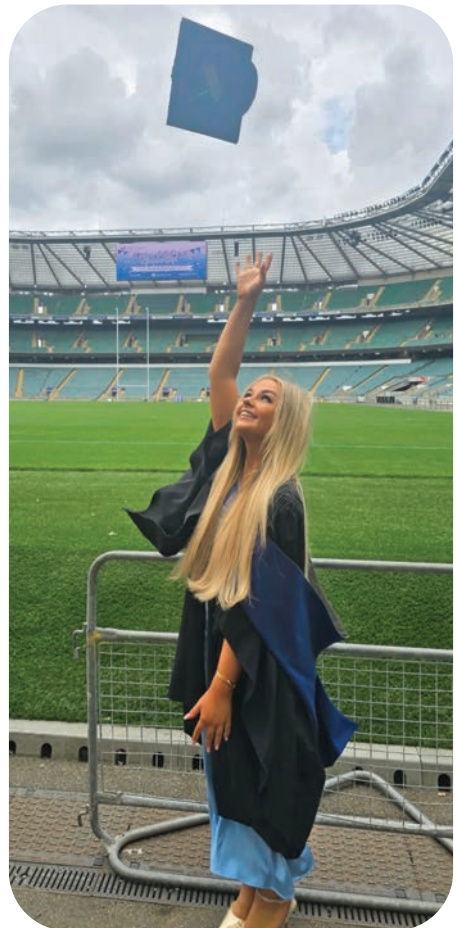
February, June, September

## Location of study

Virtual/employer's locations

## Entry Requirements

Entry requirements will typically include a minimum of 5 GCSE grades A\* – C (or equivalent qualifications) including mathematics; English (Language)



## LEVEL 4

# ASSOCIATE PROJECT MANAGER

Associate project managers are key to enabling organisations meet their business goals by successful project delivery. They do this primarily by identifying, resourcing, scheduling, and monitoring the activities that need to happen in a certain sequence and timescale. They monitor the project objectives and milestones and adjust plans in accordance with evolving circumstances to ensure that project scope and benefits are achieved planned.

### Duration

18 months plus up to 5 months End  
Point Assessment

### Mode of delivery

Blended. 90% virtual and on-line, 10%  
face-to-face (flexible), 1-1 coaching and  
workplace development

### Start dates

September, January, April

### Qualification Achieved

Level 4 Associate Project Manager  
Apprenticeship

### Apprenticeship standard

[www.instituteforapprenticeships.org/  
apprenticeship-standards/associate-  
project-manager-v1-4](http://www.instituteforapprenticeships.org/apprenticeship-standards/associate-project-manager-v1-4)

### Progression routes

Level 6 Project Controls Professional;  
Integrated Degree in Project Management



# BSC HONS PROJECT CONTROLS PROFESSIONAL \*

**\*This course title is subject to approval by the University of West London**

## Course information

This programme is designed to develop competent Project Controls Technicians. Students will learn how to control, monitor and systematically analyse progress and performance data for engineering, manufacturing, construction and infrastructure projects.

## Standard Duration

Up to 36 months

## Start Date

January, September

## Location of study

LMC London (Wimbledon)

## Entry Requirements

A level (level 3), normally in a minimum of two subjects, plus A\*-C or 9-4 GCSE qualifications (Level 2) in English and Maths. Applicants with no formal qualifications will also be considered on an individual basis.

### YEAR 1 L4

- Project Management and Ethics
- Introduction to Project Management
- Managing P3M in Organisations
- Fundamentals of Project Control
- Governance and PMO
- Project Control Business Report (PCBR) - 1

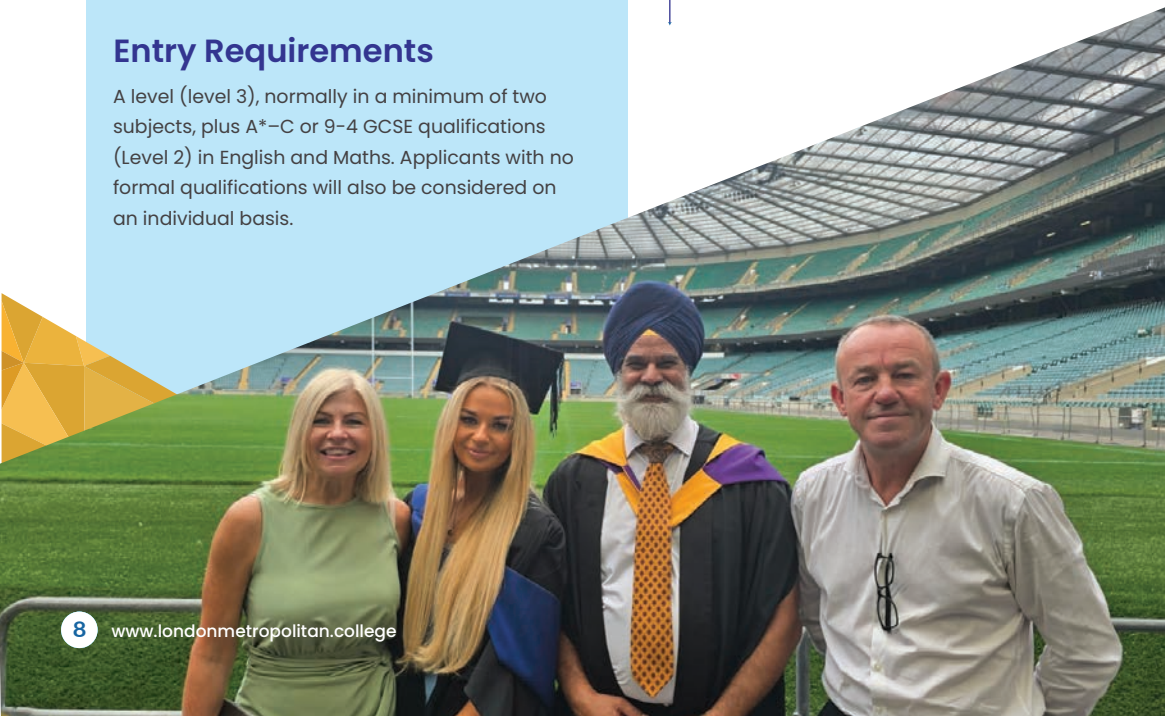
### YEAR 2 L5

- Risk Management
- Time and Cost Management
- The Project Management Office (PMO)
- Controlling Performance of P3M
- Business Research Methods
- Project Control Business Report (PCBR) - 2

### YEAR 3 L6

- Developing Project Strategies for P3M
- Project Supply Chain & Contract Management
- Project Leadership and Teams
- Data, Information Management and AI
- Dissertation/final project

Up to 36 Months





# LEVEL 6 PROJECT CONTROLS PROFESSIONAL APPRENTICESHIP

## Course information

This programme is designed to develop competent Project Controls Technicians. Students will learn how to control, monitor and systematically analyse progress and performance data for engineering, manufacturing, construction and infrastructure projects.

## Standard Duration

Up to 48 months

## Start Date

January, September

## Location of study

LMC London (Wimbledon) / employer's locations

## Entry Requirements

A level (level 3), normally in a minimum of two subjects, plus A\*-C or 9-4 GCSE qualifications (Level 2) in English and Maths. Applicants with no formal qualifications will also be considered on an individual basis.

Up to 48 Months

### YEAR 1 L4

- Project Management and Ethics
- Introduction to Project Management
- Managing P3M in Organisations
- Fundamentals of Project Control
- Governance and PMO
- Project Control Business Report (PCBR) - 1

### YEAR 2 L5

- Risk Management
- Time and Cost Management
- The Project Management Office (PMO)
- Controlling Performance of P3M
- Business Research Methods
- Project Control Business Report (PCBR) - 2

### YEAR 3 L6

- Developing Project Strategies for P3M
- Project Supply Chain & Contract Management
- Project Leadership and Teams
- Data, Information Management and AI

#### End Point Assessment

- Written Report
- Presentation
- Interview

## Project Controls Professional Apprenticeship



Degree Pathway Available

# BSc (HONS) INTEGRATED PROJECT MANAGER DEGREE APPRENTICESHIP

## Course information

London Metropolitan College (LMC) in partnership with the University of West London (UWL) offers the BSc (Hons) Integrated Project Manager Degree Apprenticeship.

This programme is designed to develop competent Project Managers and professional Project Management practitioners to fulfil the increasing demands of employers in the business industry.



## Standard Duration

Up to 48 months

## Total Credits

360 (320 on-Programme credits + 40 End-point Assessment Credits)

## Start Date

January, September

## Delivery Method

Blended (Classroom/ Virtual)

## Location of study

LMC London (Wimbledon)/UWL premises in West London/ employer's location.

## Entry Requirements

A level (level 3), normally in a minimum of two subjects, plus A\*-C or 9-4 GCSE qualifications (Level 2) in English and Maths. Applicants with no formal qualifications will also be considered on an individual basis.

## Career progression

Eligibility to become full members of the Association for Project Management (APM), the Chartered Body for the Project Profession.

### YEAR 1 L4

- The Project Manager & Ethics
- Introduction To Project Management
- Managing P3M in Organisations
- Project Finance & The Business Case
- Governance & PMO
- Work Based Project 1

### YEAR 2 L5

- Principles of Project Management
- Risk Management
- Quality Management
- Project Controls & IT
- Business Research Methods & PM
- Work Based Project
- Passed APM PMQ\* to progress to EPA

### YEAR 3 L6

- Developing Strategies for PM
- Project Supply Chain & Contracts Management
- Leadership & Teams
- Leading Change in Organisations

#### End Point Assessment

- Written Report
- Presentation
- Interview

Up to 48 Months

**BSc Hons Integrated  
Project Manager Degree  
Apprenticeship**

# BSC (HONS) GLOBAL PROJECT CONTROLS DEGREE

## Course information

London Metropolitan College (LMC) in partnership with University of West London (UWL) offers The BSc (Hons) Global Degree in Project Controls

The programme is designed to develop competent project controller and professional project management practitioners to fulfil continuously increasing demands of the employers in the business industry.

### YEAR 1 L4

- Project Management and Ethics
- Introduction to Project Management
- Managing P3M in Organisations
- Fundamentals of Project Control
- Governance and PMO
- Project Control Business Report (PCBR) – 1

### YEAR 2 L5

- Risk Management
- Time and Cost Management
- The Project Management Office (PMO)
- Controlling Performance of P3M
- Business Research Methods
- Project Control Business Report (PCBR) – 2

### YEAR 3 L6

- Developing Project Strategies for P3M
- Global Project Supply Chain & Contract Management
- Global Project Leadership and Teams
- Data, Information Management and AI
- Dissertation

## BSc (Hons) Global Project Controls Degree

### Standard Duration

36 Months

### Start Date

September / January

### Delivery Method

Face to face/Virtual

### Location of study

LMC London (Wimbledon)/Employers location. Can be delivered face to face in international locations.

### Entry Requirements

A level (level 3), normally in a minimum of two subjects, plus A\*-C or 9-4 GCSE qualifications (Level 2) in English and Maths. Applicants with no formal qualifications will also be considered on an individual basis.

### IELTS Score for International Students

6.0 - minimum 5.5 in each individual element.



# CMI MANAGEMENT AND LEADERSHIP L5

(Certificate, Diploma and Extended Diploma available)

## Course information

These qualifications are designed for practising middle managers and leaders at operations, division, departmental or specialist level, who are typically accountable to a senior manager or business owner. The primary role of a practising or aspiring manager and leader is to lead and manage individuals and teams to deliver the aims and objectives in line with the organisational strategy

## Typical units are

- ▶ Principles of Management and Leadership in an organisational context
- ▶ Principles of developing, managing and leading individuals and teams to achieve success
- ▶ Managing stakeholder relationships
- ▶ Managing projects to achieve results
- ▶ Managing change
- ▶ Creating and delivering operational plans
- ▶ Managing finance

## Delivery Approach

Virtual and on-line, evenings

## Duration

Flexible depending on the number of modules studied

## Start Date

September, February, June

## Entry Requirements

Contact the team to discuss





London  
Metropolitan  
College



Request Course  
Information



**London Wimbledon Campus**  
30 St George's Rd, London SW19 4BD



**Contact Us**  
admin@londonmetropolitan.college  
+44 (0) 208 075 7480

[www.londonmetropolitan.college](http://www.londonmetropolitan.college)